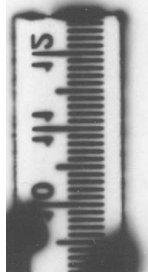


10/14/21
+ control

Col PLK1
70' 120' 70' 120' P/E

pKa
substrate

130-
Colo741 FLX1
0' 30' 2h 0' 30' 2h FSK/BMX
pKa
substrate
pPKA
substrate





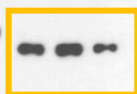
10/7/02

Colo741

0' 30' 2h FSK/IBMX

Colo
741 P/K

550



pGSK3B Ser9

(4h)

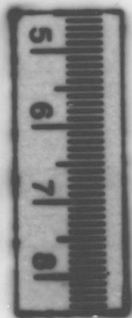
550

550

(4h)

2 lanes
1 lane





FLX1
0' 30' 2h FSK/IBMX

PLV1
0 70nm FSK

55



1 (SK)

pGSK3B Ser9

12.5hr



0

12.5hr

1 (SK)

222

10
11
12

8/11/22

Colo741 FLX1
0' 30' 2h 0' 30' 2h FSK/IBMX

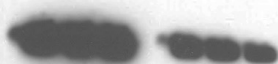
Colo
0' 30' 2h

FLX1
0' 30' 2h FSK

55-



+ GSK3 β
GSK3B



55
11
12

Colo741

0' 30' 2h

10/2/22
35-

COLO741

0' 30' 2h FSK/IBMX

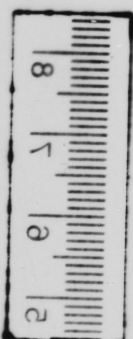
Ctl.

35-
pMAPK1/3
Thr202/Thr204

152K

0' 30' 2h

FSK



10/7/22
Panda

FLX1
0' 30' 2h FSK/IBMX

PT1
0 30' 2h FSK

35-

pMAPK1/3
Thr202/Thr204

4h

PT1

FLX1

30' 2h

Cult.

0

